

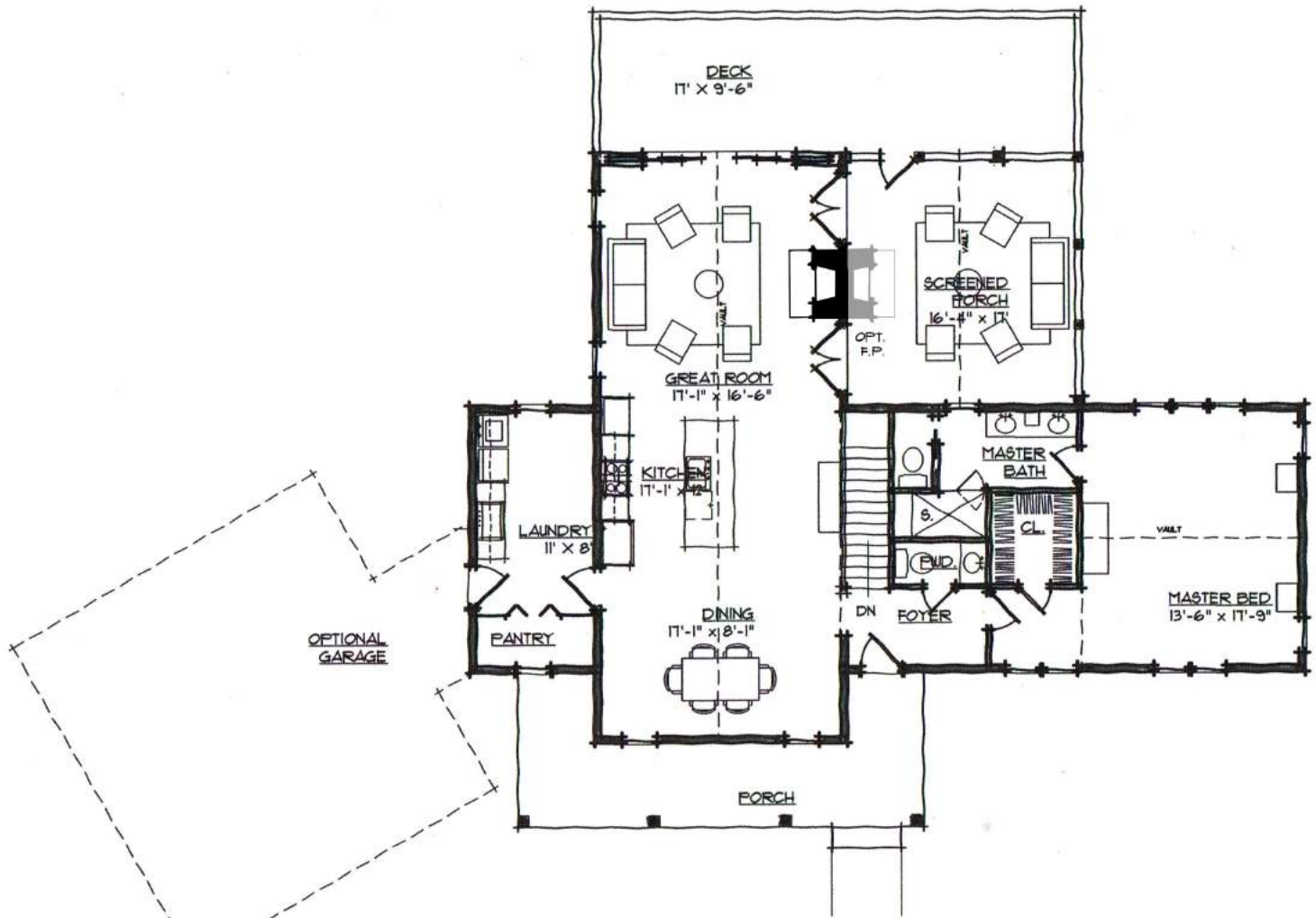
The Cosdrew



These drawings are illustrative and subject to change. They are the property of Sexton Griffith Builders and Anthemion Architecture, LLC. Drawings are not to be reproduced or copied in whole or in part without expressed consent. © August, 2018.



ANTHEMION ARCHITECTURE, LLC
FRANK BAIN, AIA | CRAN
W.W.W.ANTHEMIONARCHITECTURE.COM



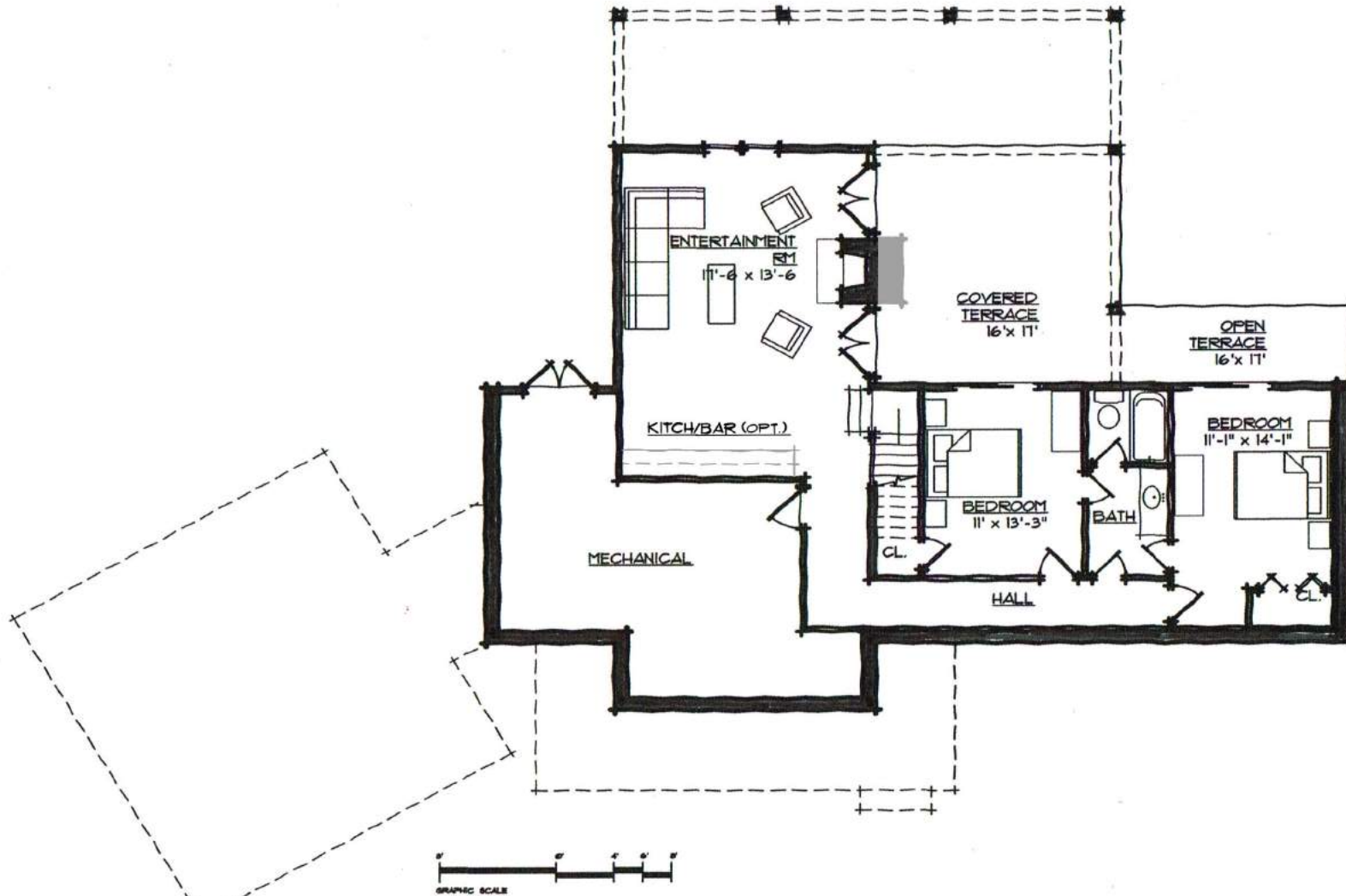
Main Level Plan

The Cosdrew

Total Heated 2,614 Sq. Ft.	Main Level 1,548 Sq. Ft.	Lower Level 1,066 Sq. Ft.	Upper Level Option 643 Sq. Ft.	Plan Dimensions 57'-10" x 5'-9"
-------------------------------	-----------------------------	------------------------------	-----------------------------------	------------------------------------



ANTHEMION ARCHITECTURE, LLC
FRANK BAIN, AIA | CRAN
W.W.W.ANTHEMIONARCHITECTURE.COM



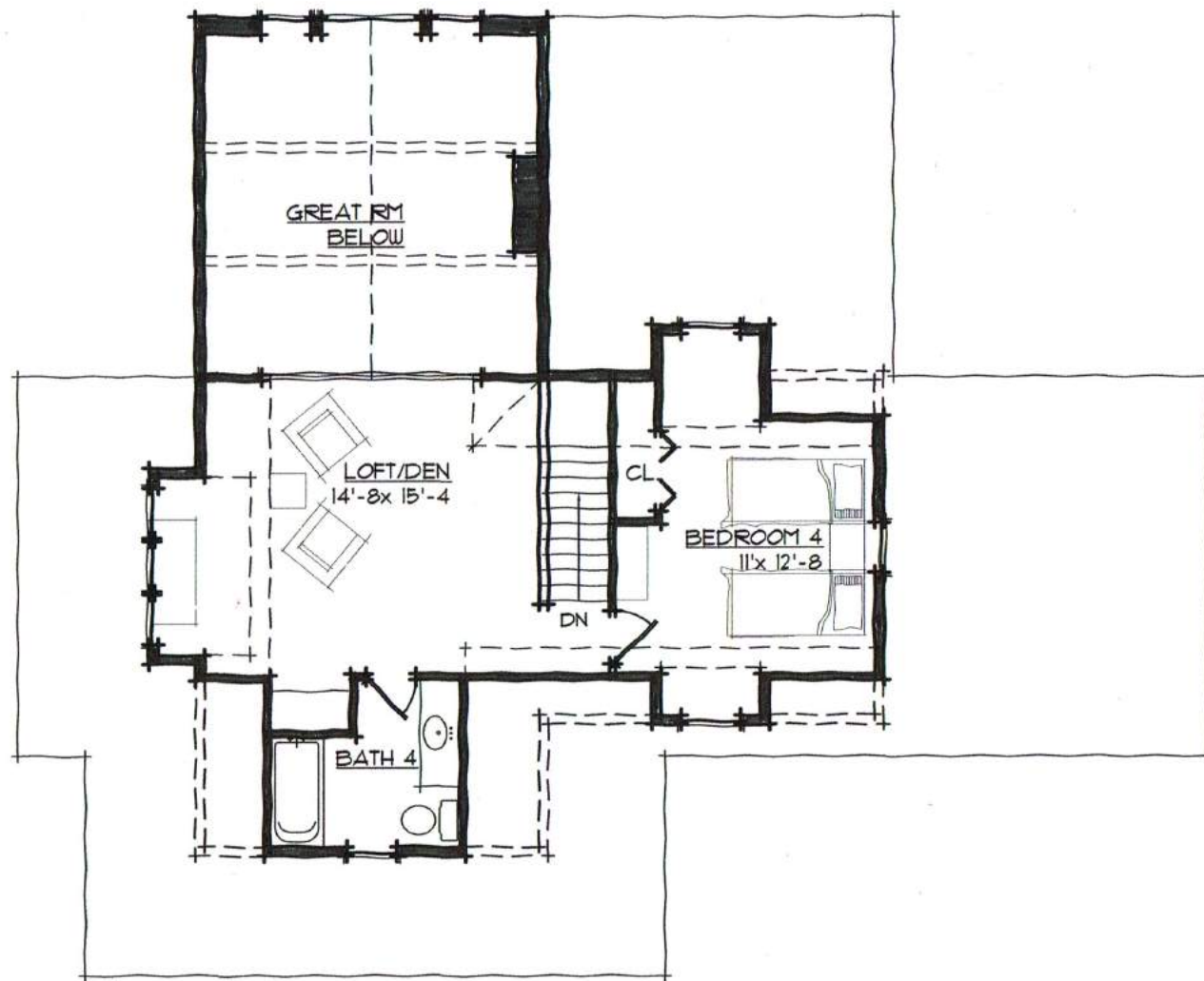
The Cosdrew

Lower Level
1,066 Sq. Ft.



ANTHEMION ARCHITECTURE, LLC
FRANK BAIN, AIA | CRAN

W.W.W.ANTHEMIONARCHITECTURE.COM



The Cosdrew

Upper Level Option
643 Sq. Ft.



ANTHEMION ARCHITECTURE, LLC
FRANK BAIN, AIA | CRAN

W.W.W.ANTHEMIONARCHITECTURE.COM